

PALO ALTO NETWORKS AND LOGICMONITOR

Benefits

Complement your investment in Palo Alto Networks Next-Generation Firewall with LogicMonitor's SaaS-based performance monitoring for the modern IT infrastructure.

- View performance of Palo Alto Networks NGFW in the same platform as your other networking equipment and IT infrastructure
- Use LogicMonitor's dashboards, forecasting, predictive alerting, and customizable reporting to elevate visibility into network performance
- Alert thresholds are pre-configured based on industry best practices
- Deploy in minutes and immediately start collecting data

The Challenge

Many IT operations teams use various monitoring tools to track the health and performance of their IT infrastructure. Monitoring “tool sprawl” frequently results in false-positive alerts, and makes root-cause analysis of actual issues much more difficult.

LogicMonitor SaaS-Based Performance Monitoring

When used with LogicMonitor®, Palo Alto Networks® customers benefit from unified IT infrastructure monitoring. LogicMonitor allows for comprehensive monitoring of an entire IT infrastructure — including on-premise, cloud and hybrid deployments — in the same platform, allowing operations engineers to react to incidents more quickly and easily correlate performance data across multiple systems to simplify root-cause analysis.

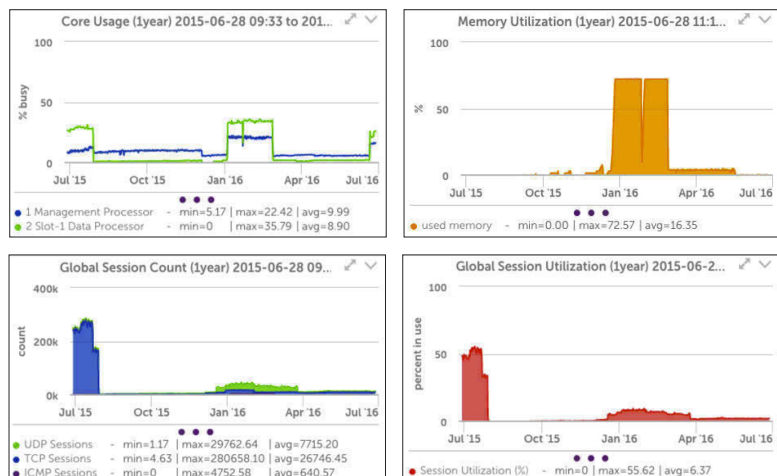
Palo Alto Networks + LogicMonitor

LogicMonitor's end-to-end IT monitoring platform includes support for Palo Alto Networks right out of the box, allowing users to measure the health and performance of their Palo Alto Networks NGFW along with the rest of their technology stack. LogicMonitor automatically discovers everything users need to know about their Palo Alto Networks NGFW and deliver the monitoring, alerting and graphing you need to maintain high availability and high security. LogicMonitor's dashboards, forecasting, predictive alerting, and customizable reporting elevate visibility into network performance and help users identify bandwidth issues, performance bottlenecks, and DDoS attacks using protocols like NetFlow, JFlow, sFlow or IPFIX.

USE CASE #1

Challenge: Track resource utilization across Palo Alto Networks devices to ensure that you have sufficient CPU, memory, network and session capacity for your operations.

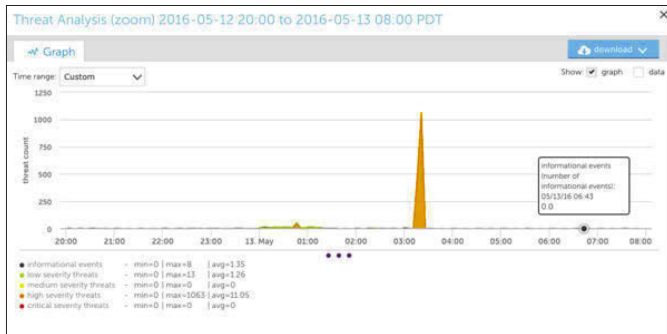
Solution: Use LogicMonitor's resource monitoring LogicModules to track usage over time and forecast when you might exceed the capacity of your devices.



USE CASE #2

Challenge: Know when your networks are seeing large numbers of attacks.

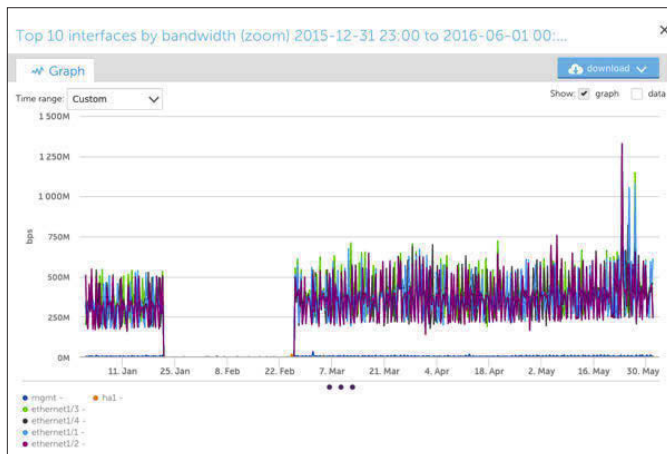
Solution: Leverage Palo Alto Networks intelligent threat analysis to receive alerts based on high volumes of network threats being detected by your firewalls.



USE CASE #3

Challenge: Track traffic patterns over time to identify anomalies and correlate with other issues.

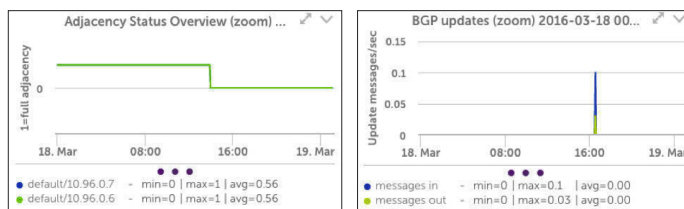
Solution: Use LogicMonitor's Palo Alto Networks Interface LogicModules to view network traffic by type.



USE CASE #4

Challenge: Ensure you're aware of any changes to your routing environment.

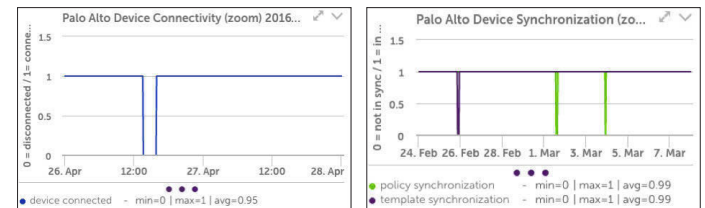
Solution: Use LogicMonitor's OSPF and BGP LogicModules to track and alert on changes to network routes.



USE CASE #5

Challenge: Ensure all Palo Alto Networks policies and configurations remain connected and in sync with Panorama™ network security management.

Solution: Use LogicMonitor's Panorama LogicModules to alert the network administrator if there is a policy, configuration or device template mismatch across your entire Palo Alto Networks deployment.



About LogicMonitor

LogicMonitor's automated SaaS performance monitoring platform provides IT Ops teams with end-to-end visibility and actionable metrics to manage today's sophisticated on-premise, hybrid, and cloud infrastructures. Deploy and manage your monitoring faster and automatically with AutoDiscovery of devices. Act on infrastructure performance data using built-in and customizable dashboards, performance forecasting, and complete reporting. Use built-in workflow capabilities including alerting routing and escalation management to improve your IT team's issue response and resolution time.

Find out more at www.logicmonitor.com.

About Palo Alto Networks

Palo Alto Networks is the next-generation security company, leading a new era in cybersecurity by safely enabling applications and preventing cyber breaches for tens of thousands of organizations worldwide. Built with an innovative approach and highly differentiated cyberthreat prevention capabilities, our game-changing security platform delivers security far superior to legacy or point products, safely enables daily business operations, and protects an organization's most valuable assets.

Find out more at www.paloaltonetworks.com.



4401 Great America Parkway
Santa Clara, CA 95054

Main: +1.408.753.4000
Sales: +1.866.320.4788
Support: +1.866.898.9087

www.paloaltonetworks.com

© 2016 Palo Alto Networks, Inc. Palo Alto Networks is a registered trademark of Palo Alto Networks. A list of our trademarks can be found at <http://www.paloaltonetworks.com/company/trademarks.html>. All other marks mentioned herein may be trademarks of their respective companies. pan-logicmonitor-tps-072916