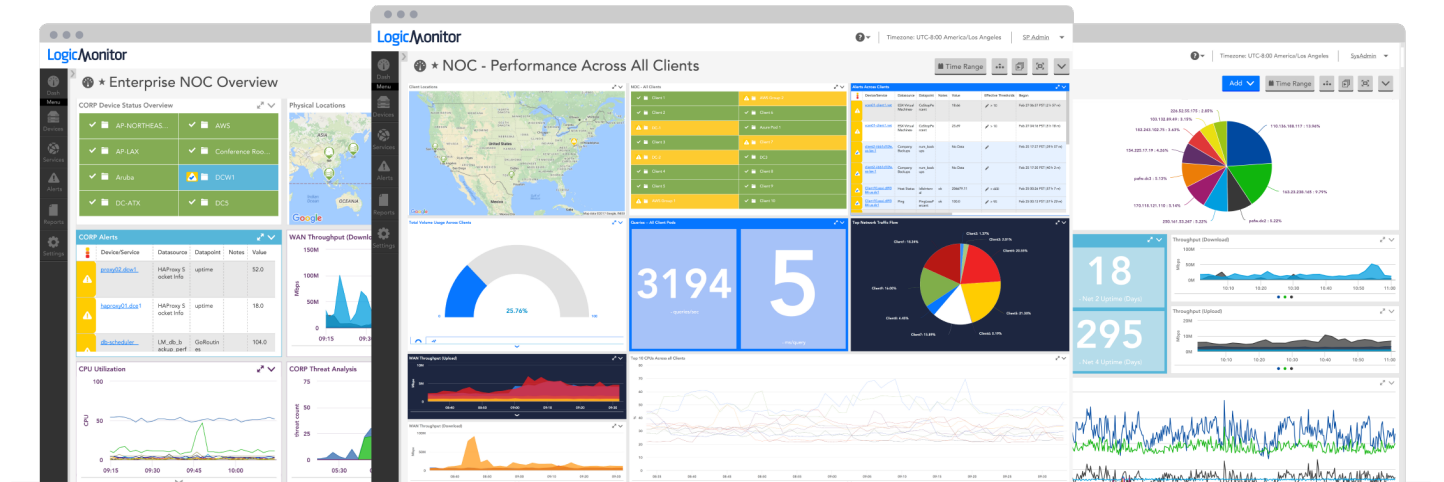


Unified Monitoring for Today. Flexibility for Tomorrow.

Overview: Service Providers must manage an increasingly complex and distributed IT landscape. Partner with LogicMonitor to increase revenue, streamline operations, and expand portfolio offerings. Gain the speed and visibility needed to future-proof your business.



Increase Revenue

Generate new revenue and leverage competitive partner pricing by adding a premium monitoring solution to your services portfolio.

Streamline Troubleshooting

Features like forecasting and correlation enable engineers to proactively identify and fix issues before clients are impacted.

Improve Flexibility

LogicMonitor provides the depth of coverage required to monitor today's IT infrastructure and the extensibility needed to handle tomorrow's.

TRUSTED BY



Purpose Built for Service Providers



Built-in Automation

Automated processes, including network scan, dynamic grouping, and clonable client dashboards, enable rapid deployments and standardized workflows.



Powerful Access Control

Granular role-based access control streamlines the customization of user and client privileges, including access to device groups, dashboards, reports, API data, and more.



Client Visibility

SaaS architecture enables coverage of distributed client environments without expensive hardware. Manage all of your clients' environments from a unified admin account.



Extensive Coverage

1000+ monitoring templates ensure the platform stays current with technology trends and supports clients' future business goals.



Pre-built Integrations

Streamline workflows by integrating LogicMonitor with the rest of your technology stack, including ServiceNow, Autotask, ConnectWise, PagerDuty, and more.



Consolidate Tools

Extensive breadth of coverage allows for the replacement of a variety of tools. Fewer tools mean less noise, faster MTTR, and more efficient troubleshooting.

Partnership Priority

LogicMonitor's partner program provides marketing support and partner pricing, allowing Service Providers to scale rapidly while remaining cost-effective.

Customer Testimonials



LogicMonitor is flexible enough to take on all of our needs today and also future-proofs us for tomorrow.

- **Jessie Bryan, VP of Engineering, Impulse**



We haven't gone up a monitoring challenge we couldn't face since deploying LogicMonitor.

- **Brandon Myers, Director of Managed Services, TekLinks**



LogicMonitor's built-in automation allows us to proactively manage the dynamic requirements in the fast-changing IT marketplace. Our customers can continue to count on us to deliver service level excellence based on the best technology toolsets available.

- **Jason Waldrop, CEO, CWPS**