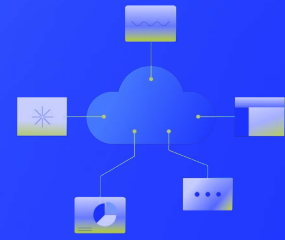


Cost Optimization: Cloud Cost Clarity and Savings



Core Capabilities

Multi-Cloud Spend Visibility and Analysis

Provides a unified view of cloud spend across AWS, Azure, and GCP with filtering by account, service, and resource type, so teams can quickly understand cost drivers and track spend across environments.

Observability-Driven Recommendations

Identifies idle, underutilized, or oversized resources using utilization data like CPU, memory, and resource state, so teams can reduce waste while maintaining performance and reliability.

Spend Forecasting and Budget Control

Tracks current spend and projects future usage against defined budgets, giving teams early visibility into cost trends so they can plan, adjust, and stay within budget.

Proactive Alerts and Workflow Integration

Triggers budget and anomaly alerts through existing alerting and ticketing systems, so teams can take action within their normal workflows before costs escalate.

Controlling Costs Across Cloud Providers

Managing cloud environments is increasingly complex, with limited visibility into resource usage and rising pressure to control costs without impacting performance. ITOps teams need a clear way to understand spend, identify cost drivers, and stay ahead of budget overruns across multi-cloud environments.

Cost Optimization enables cloud cost control and confident resource optimization for ITOps teams. As part of the LogicMonitor platform, it brings cost visibility, data-driven recommendations, and budget alerts into daily workflows so teams can take action early, reduce waste, and stay aligned with budget and performance goals.

How Cost Optimization Works



Unifies cloud cost and usage data

Pulls billing data from AWS, Azure, and GCP via API and combines it with observability signals to give a complete view of spend and usage.



Identifies and recommends optimization opportunities

Analyzes utilization to surface idle, underutilized, or oversized resources and provides rightsizing recommendations based on resource performance.



Tracks spend trends and forecasts cost

Monitors how spend is changing over time and projects future usage so teams can understand where costs are heading and plan accordingly.



Alerts teams before costs exceed budget

Triggers budget and anomaly alerts through existing alerting and ticketing systems so teams can take action within their normal workflows.

